



GMT MONTHLY MEMBERSHIP PROGRESS REPORT

Results as of: 5/31/2020

GMT Constitutional Area 5 - E, Group N

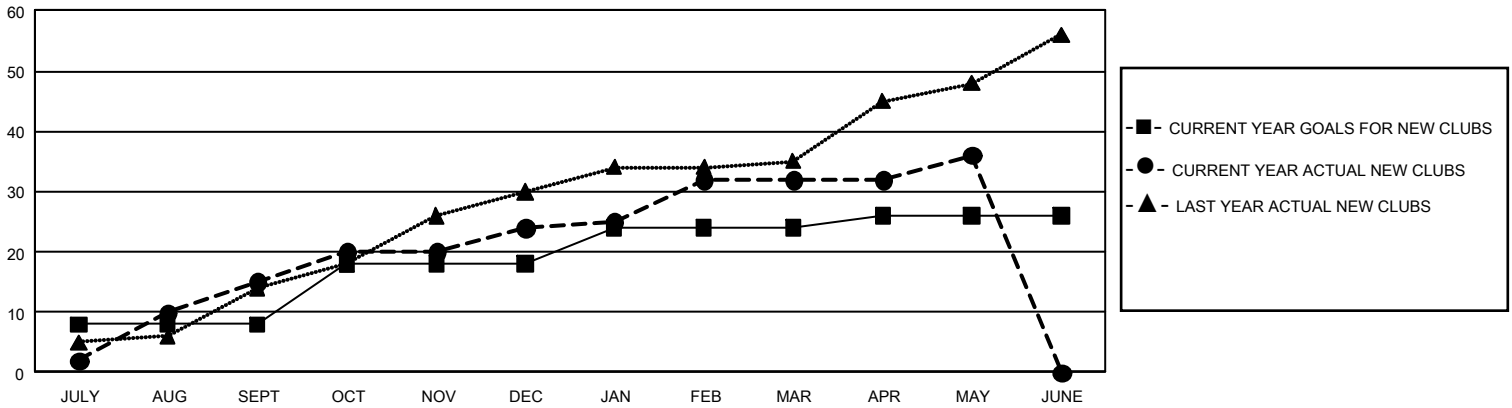
GMT: OPEN

REPORT DOES NOT INCLUDE CLUBS IN UNDISTRICTED AREAS.

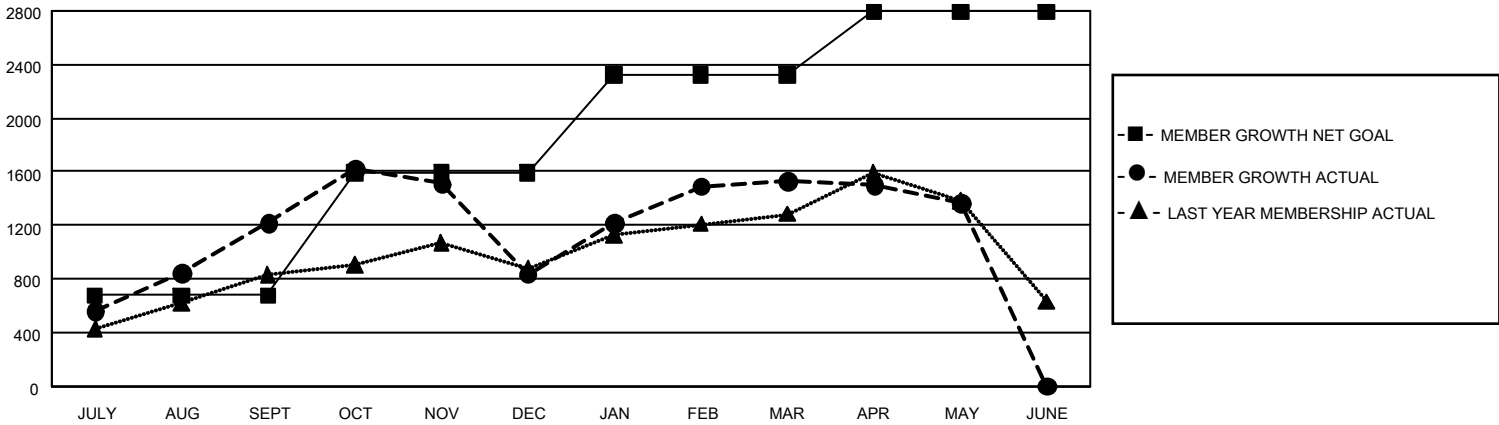
Clubs			
RESULTS FOR 2019-2020			
QUARTER	NEW CLUB GOAL	NEW CLUBS	DROPPED CLUBS
JULY/AUG/SEPT	24	15	7
OCT/NOV/DEC	30	9	8
JAN/FEB/MAR	18	8	6
APR/MAY/JUNE	6	4	0

Members			
RESULTS FOR 2019-2020			
QUARTER	MEMBER GROWTH NET GOAL	MEMBER GROWTH ACTUAL	DROPPED MEMBERS ACTUAL (including transfers)
JULY/AUG/SEPT	2,025	2,146	796
OCT/NOV/DEC	2,745	816	1,142
JAN/FEB/MAR	2,205	999	275
APR/MAY/JUNE	1,410	211	352

GOALS AND ACTUAL NEW CLUBS CUMULATIVE



GOALS AND ACTUAL MEMBERS CUMULATIVE



DROPPED CLUBS: 21	532 CLUBS OF 775 ADDED 1 OR MORE NEW MEMBERS	GENDER DISTRIBUTION	
		MALE 16,223 (69.61%)	FEMALE 7,082 (30.39%)
DROPPED MEMBERS		TOTAL FAMILY UNIT MEMBERS 2,753	
DECEASED 45	CLICK HERE FOR CUMULATIVE MEMBERSHIP DATA	FAMILY MEMBERS PAYING HALF DUES 1,536	
CLUB CANCELLED 140			
OTHER 2,379			
TOTAL 2,564			